



## APPENDIX 5.8-A Historic Climate Analysis for Howe Sound

A summary of the historic temperature analysis, including statistical significance, is presented in Figure 1. This figure is based on the climate normals for the 1971 to 2010 period and shows a distinctive upward trend for the temperatures over the period covered by the normals.

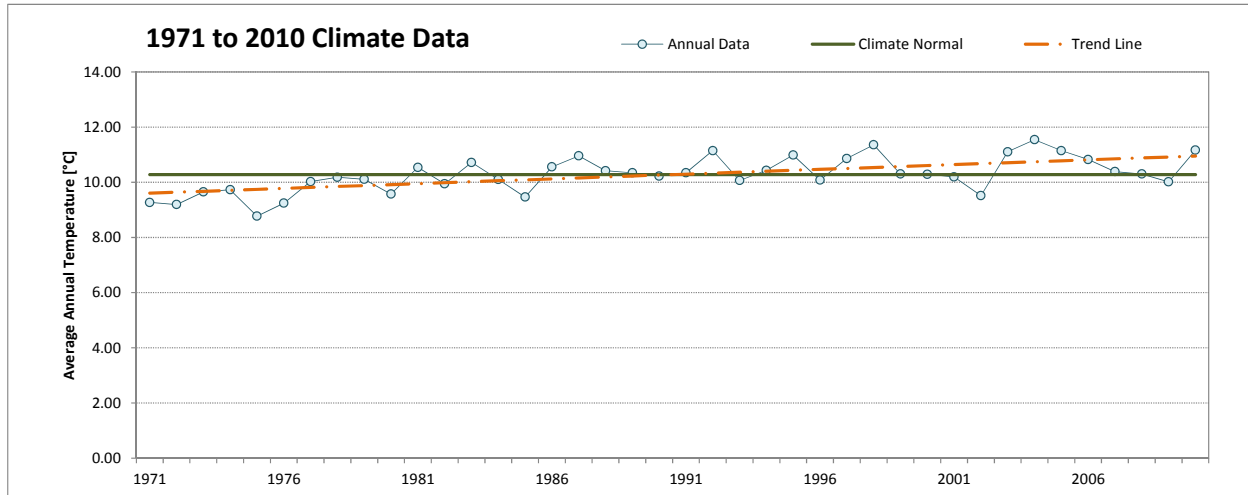


Figure A1: Historic Temperature Analysis for Gibsons Gower Point Station – Annual

Similar figures are shown below for the seasonal temperature trends (Figures 2 through 5). As discussed in Section 2 of this report, the annual trend is statistically significant at the 99.9<sup>th</sup> percentile, as are the summer and winter trends, while the spring and fall trends are statistically significant at the 95<sup>th</sup> percentile.

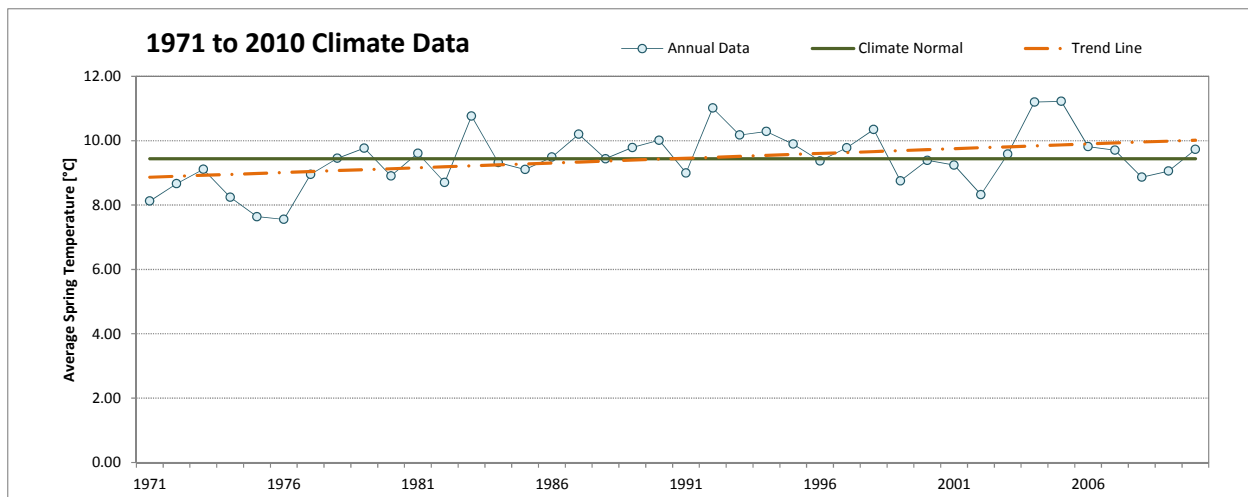


Figure A2: Historic Temperature Analysis for Gibsons Gower Point Station – Spring



## APPENDIX 5.8-A Historic Climate Analysis for Howe Sound

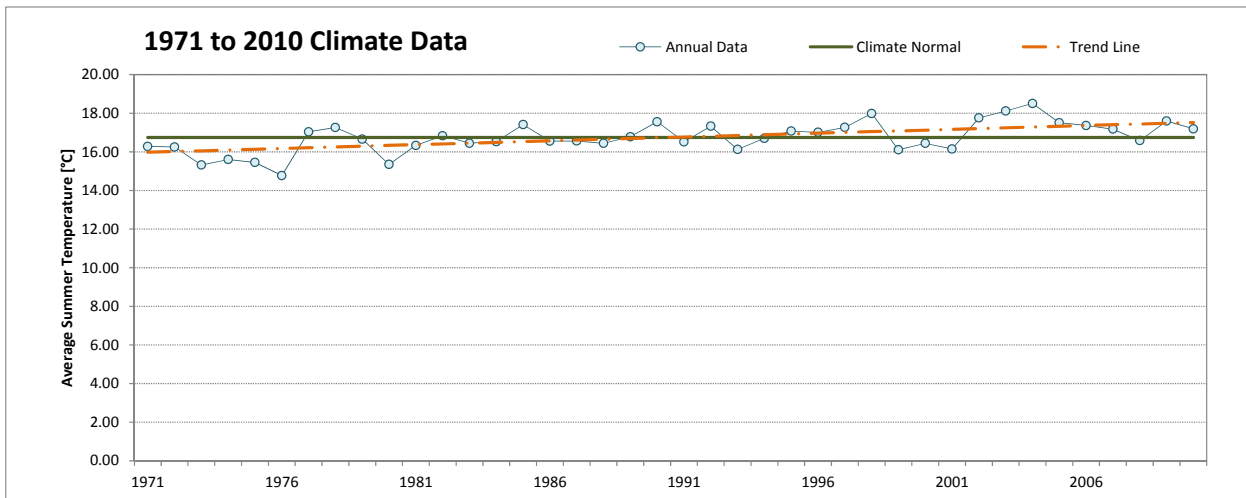


Figure A3: Historic Temperature Analysis for Gibsons Gower Point Station – Summer

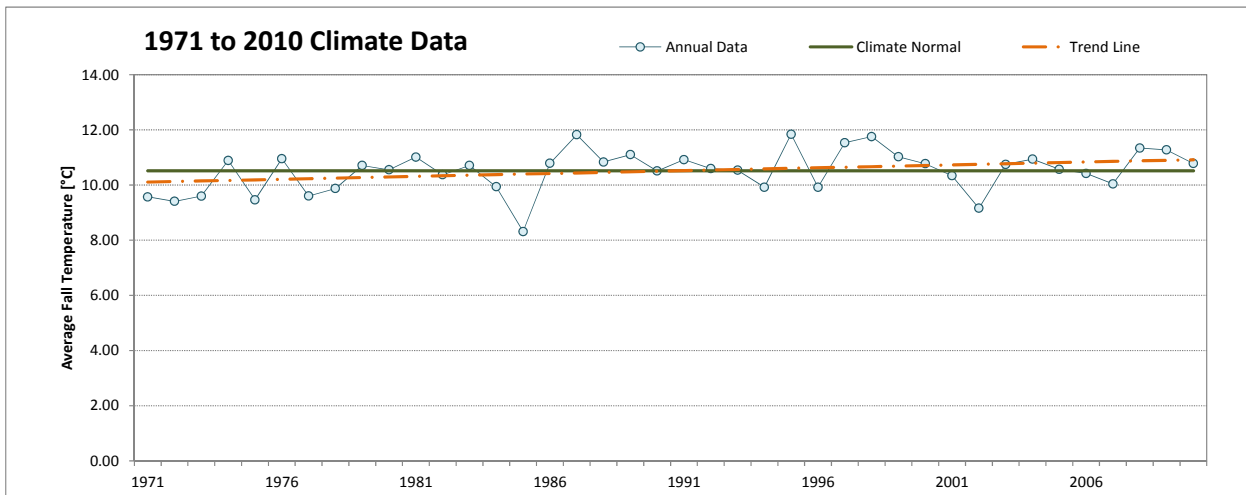


Figure A4: Historic Temperature Analysis for Gibsons Gower Point Station – Fall



## APPENDIX 5.8-A Historic Climate Analysis for Howe Sound

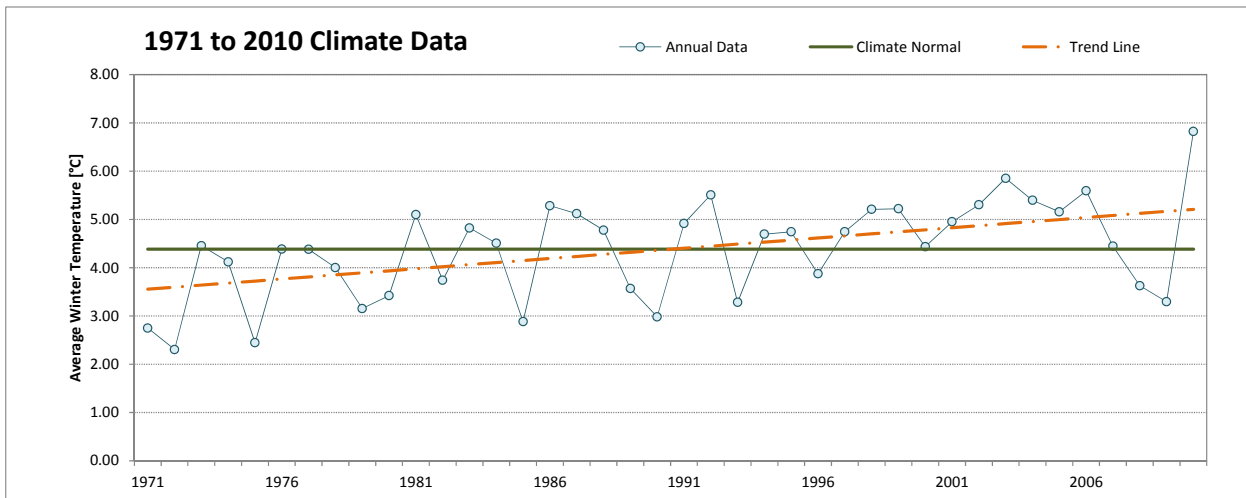


Figure A5: Historic Temperature Analysis for Gibsons Gower Point Station – Winter

The annual trend for precipitation in the climate normals period is presented in Figure 6. Similar figures are shown below for the seasonal precipitation trends (Figures 7 through 10). Only the summer season is statistically significant at the 90<sup>th</sup> percentile.

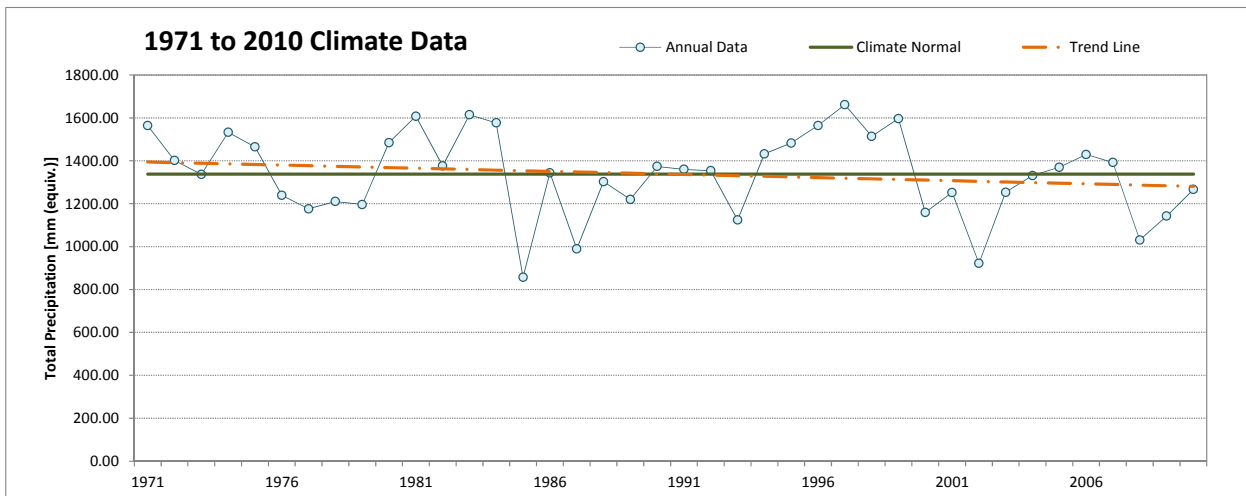


Figure A6: Historic Precipitation Analysis for Gibsons Gower Point Station – Annual



## APPENDIX 5.8-A Historic Climate Analysis for Howe Sound

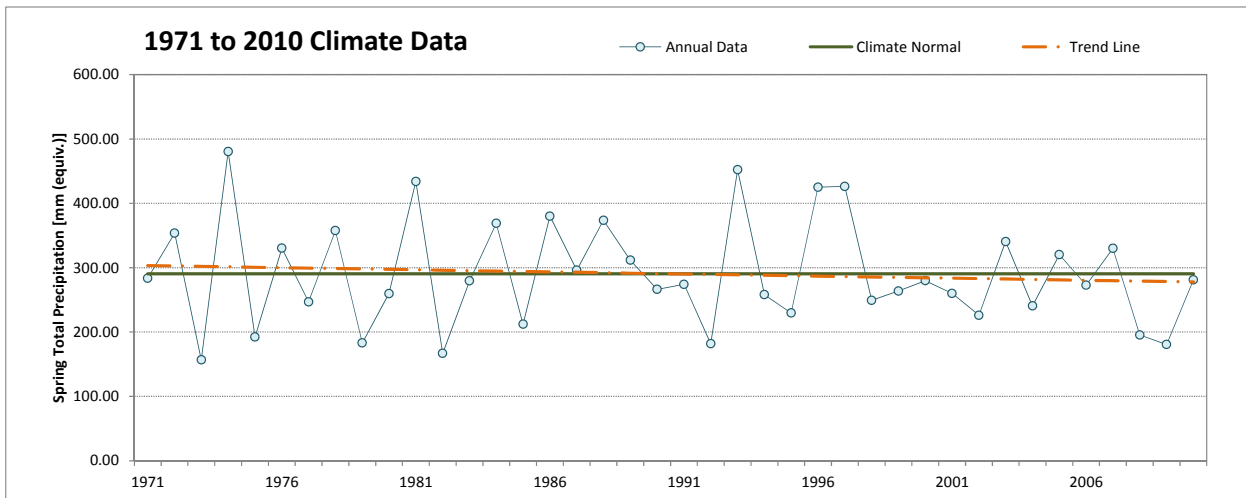


Figure A7: Historic Precipitation Analysis for Gibsons Gower Point Station – Spring

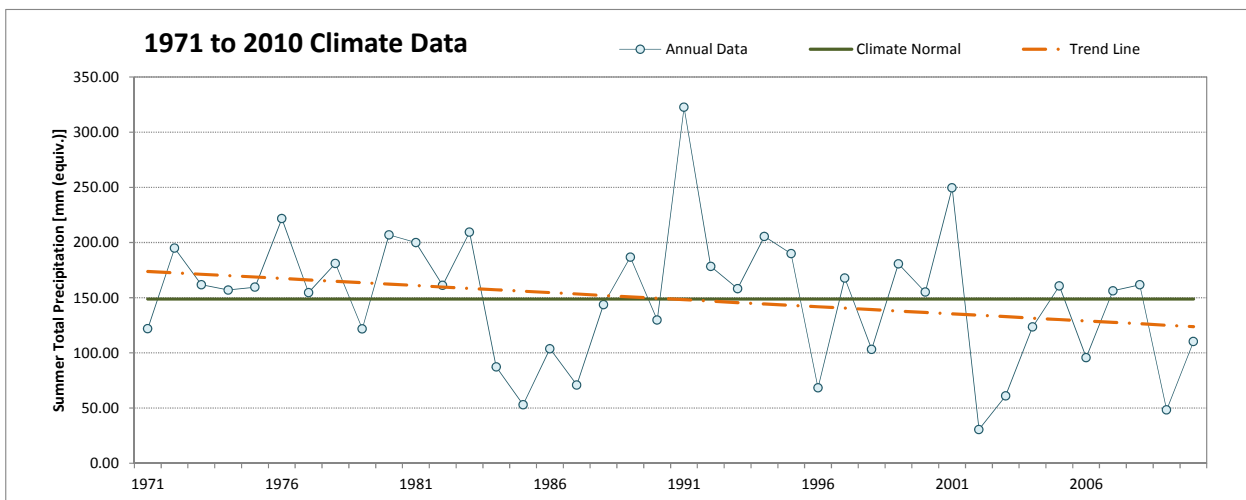


Figure A8: Historic Precipitation Analysis for Gibsons Gower Point Station – Summer



## APPENDIX 5.8-A Historic Climate Analysis for Howe Sound

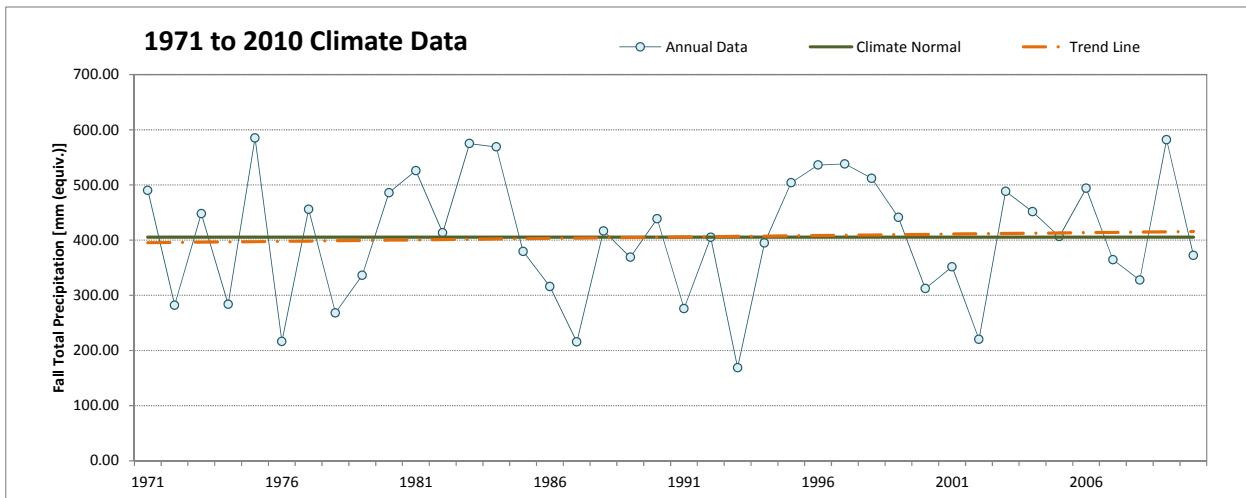


Figure A9: Historic Precipitation Analysis for Gibsons Gower Point Station – Fall

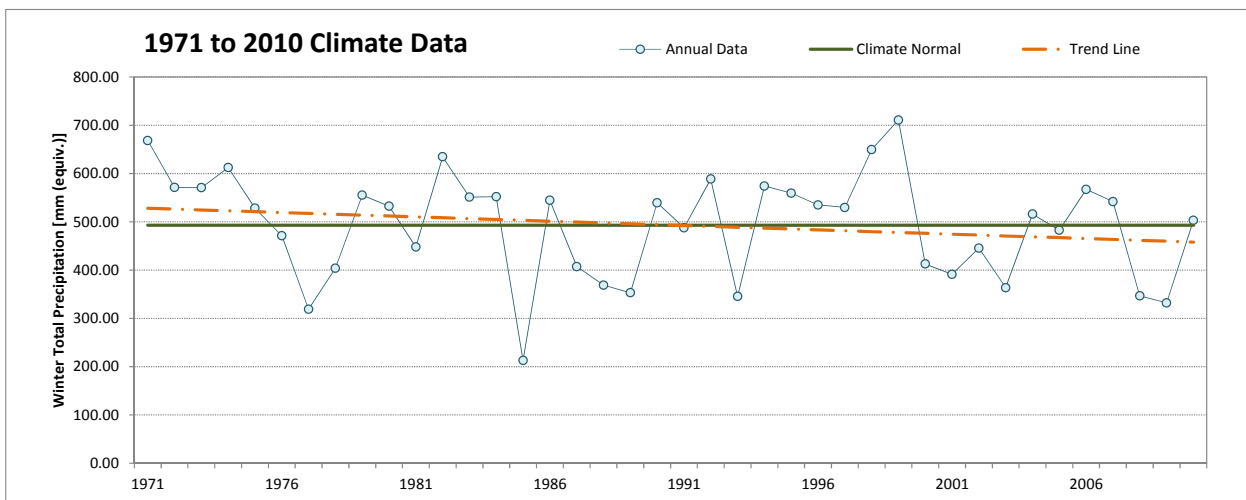


Figure A10: Historic Precipitation Analysis for Gibsons Gower Point Station – Winter

O:\Final\2011\1422\11-1422-0046\1114220046-581-App-Rev0\Appendix 5.8-A\_Historical Climate Analysis.docx